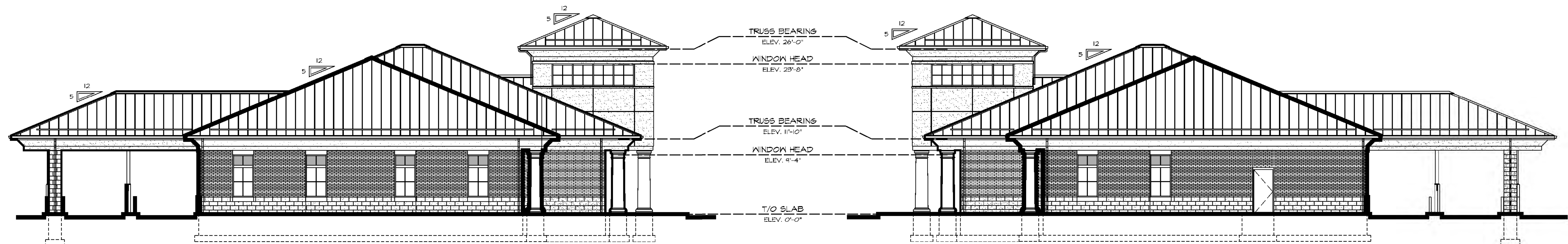
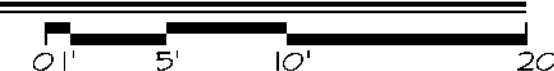




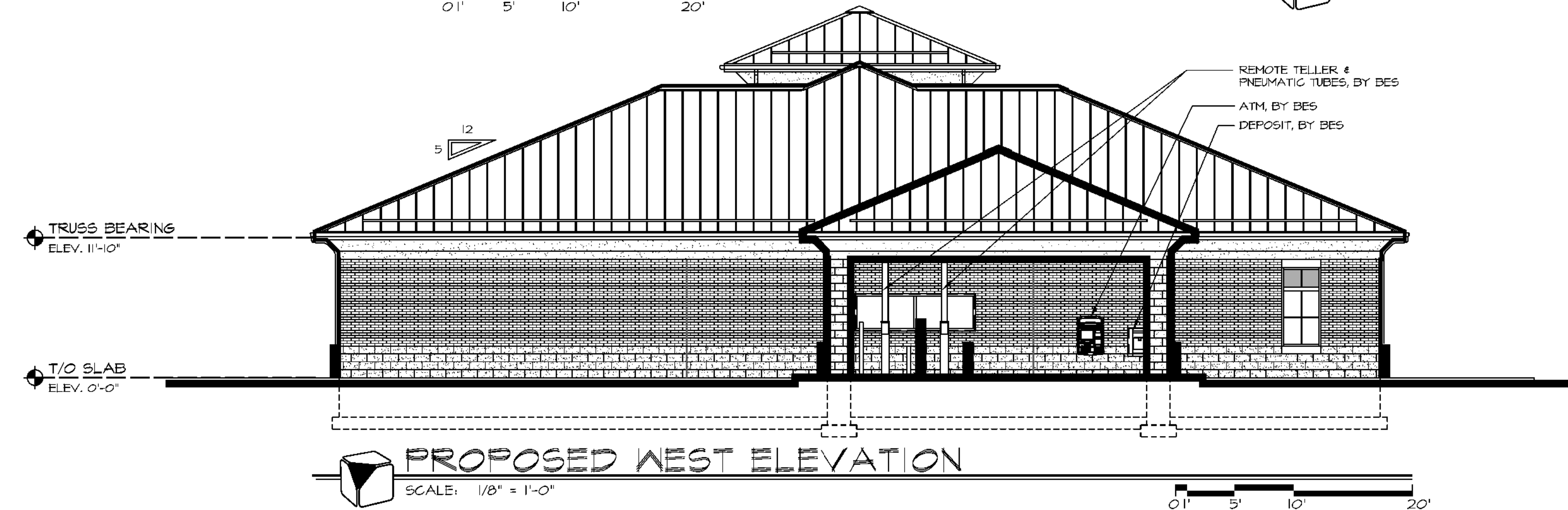
PROPOSED EAST ELEVATION
SCALE: 1/4" = 1'-0"



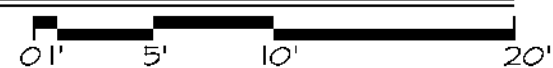
PROPOSED SOUTH ELEVATION
SCALE: 1/8" = 1'-0"



PROPOSED NORTH ELEVATION
SCALE: 1/8" = 1'-0"



PROPOSED WEST ELEVATION
SCALE: 1/8" = 1'-0"



CARMEL BRANCH
STONELEIGH AVE & TERRACE DRIVE CARMEL, NY

MAURI ASSOCIATES ARCHITECTS PC
303 MILL STREET FOUGHKEEPSIE NEW YORK 12601 845-452-1030